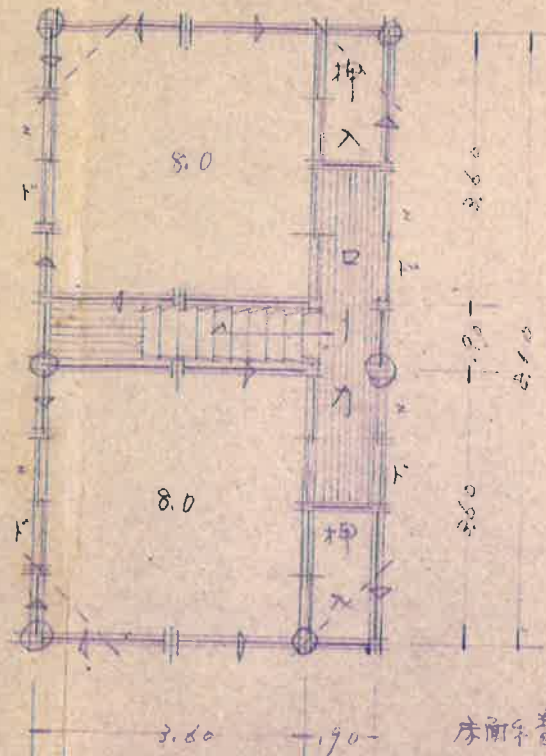
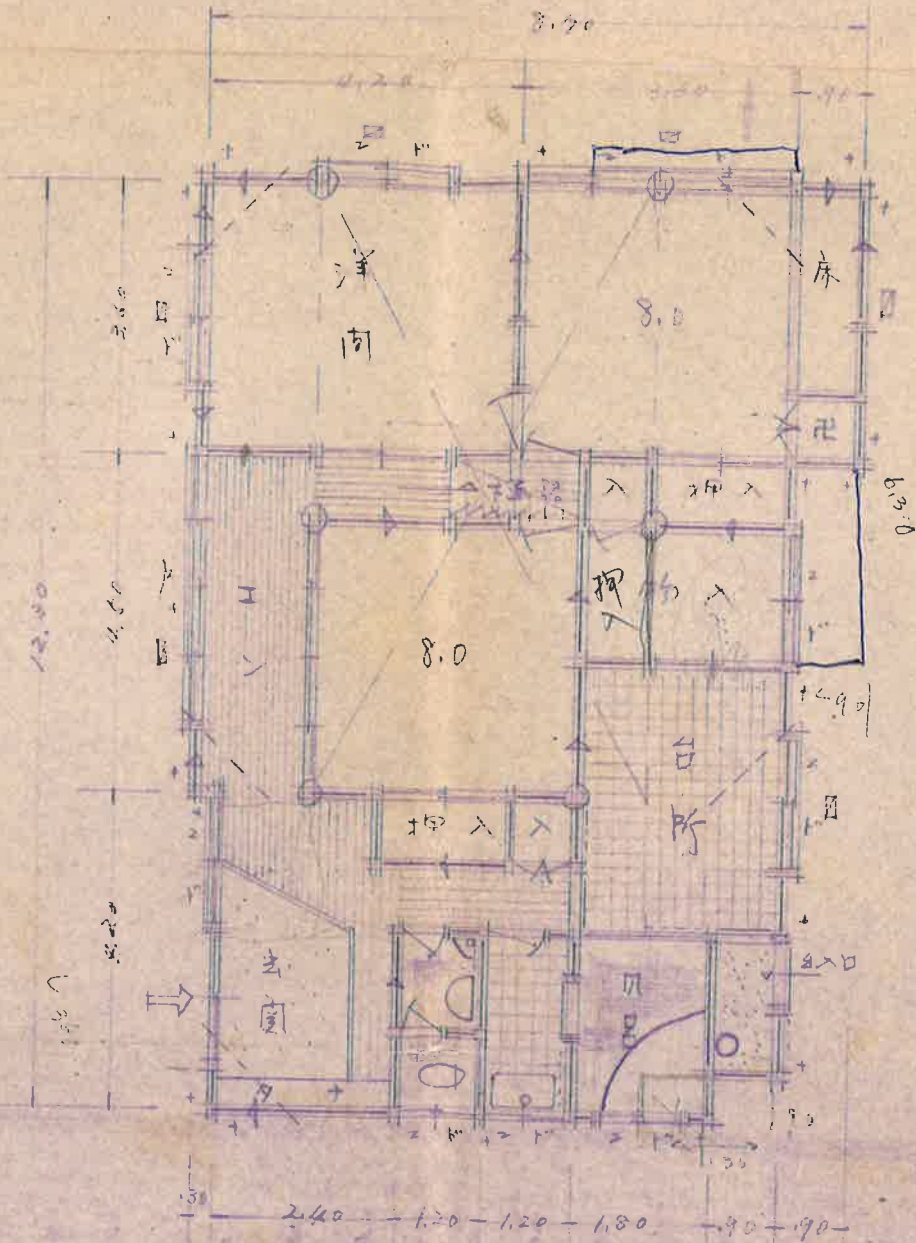


各階平面図

1/100

1階

2階



床前手巻

1階  
 $3.70 \times 3.60 = 13.32$   
 $7.80 \times 4.50 = 35.10$   
 $7.50 \times 3.60 = 27.00$   
 $6.60 \times 0.60 = 3.96$   
 97.58 m<sup>2</sup>

2階 4.50 x 8.10 = 36.45 m<sup>2</sup>

- R 134
- 外 灯罩 105 x 105 mm
  - 管 120 mm 以下
  - 通柱 120 x 120
  - 柱 120 x 120
  - 換気孔 25 x 15 cm
  - +