

The map illustrates the layout of the Nami City Beautification Center. Key features include:

- Topography:** Contour lines indicating elevation, with specific points marked at 180.0 and 156.0 meters.
- Facilities:**
  - ごみ計量機 (Waste Weighing Machine)
  - ごみ焼却施設 (Waste Incineration Facility)
  - 車庫棟 (Garage Building)
  - 浸出水処理施設 (Leachate Treatment Facility)
  - 埋立処分場 (Landfill Disposal Area - circled in red)
- Surroundings:**
  - 大口町 (Ooguchi Town) to the northwest.
  - 坪野町 (Tsunobori Town) to the west.
  - Various roads and paths throughout the site.

埋立処分場維持管理業務委託

# 能美市美化センター埋立処分場 平面図

ごみ覆土工 V=935m<sup>3</sup>(A=1,870m<sup>2</sup>×0.5m)

土砂(1,020m<sup>3</sup>)

V=565m<sup>3</sup>  
(A=1,130m<sup>2</sup>×0.5m)

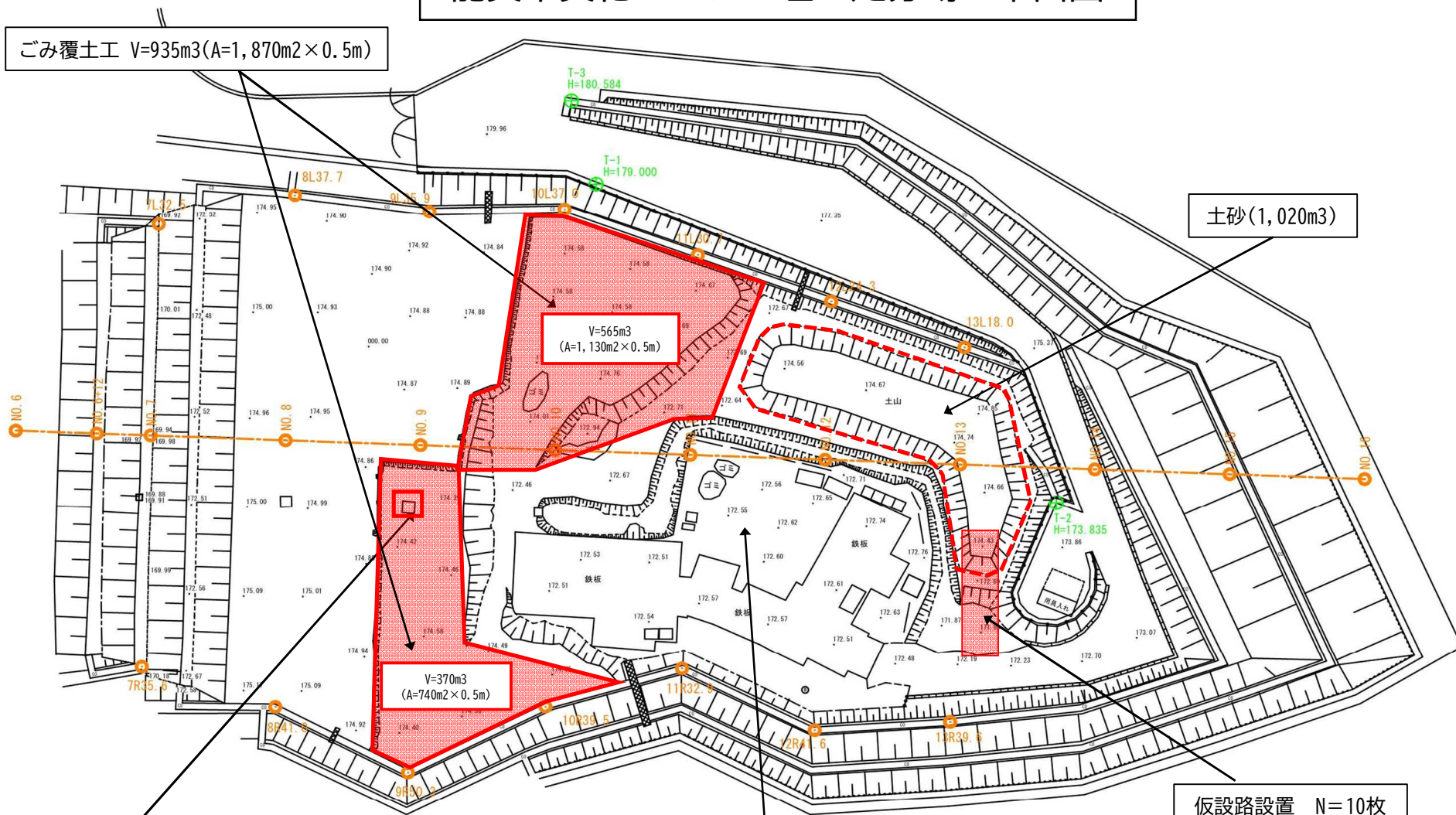
V=370m<sup>3</sup>  
(A=740m<sup>2</sup>×0.5m)

ガス抜き管設置工 N=1基

残余容量調査 N=1回

仮設路設置 N=10枚

埋立処分場維持管理業務委託



# 能美市美化センター覆土土取場・沈砂池 平面図

沈砂池維持管理工 1回

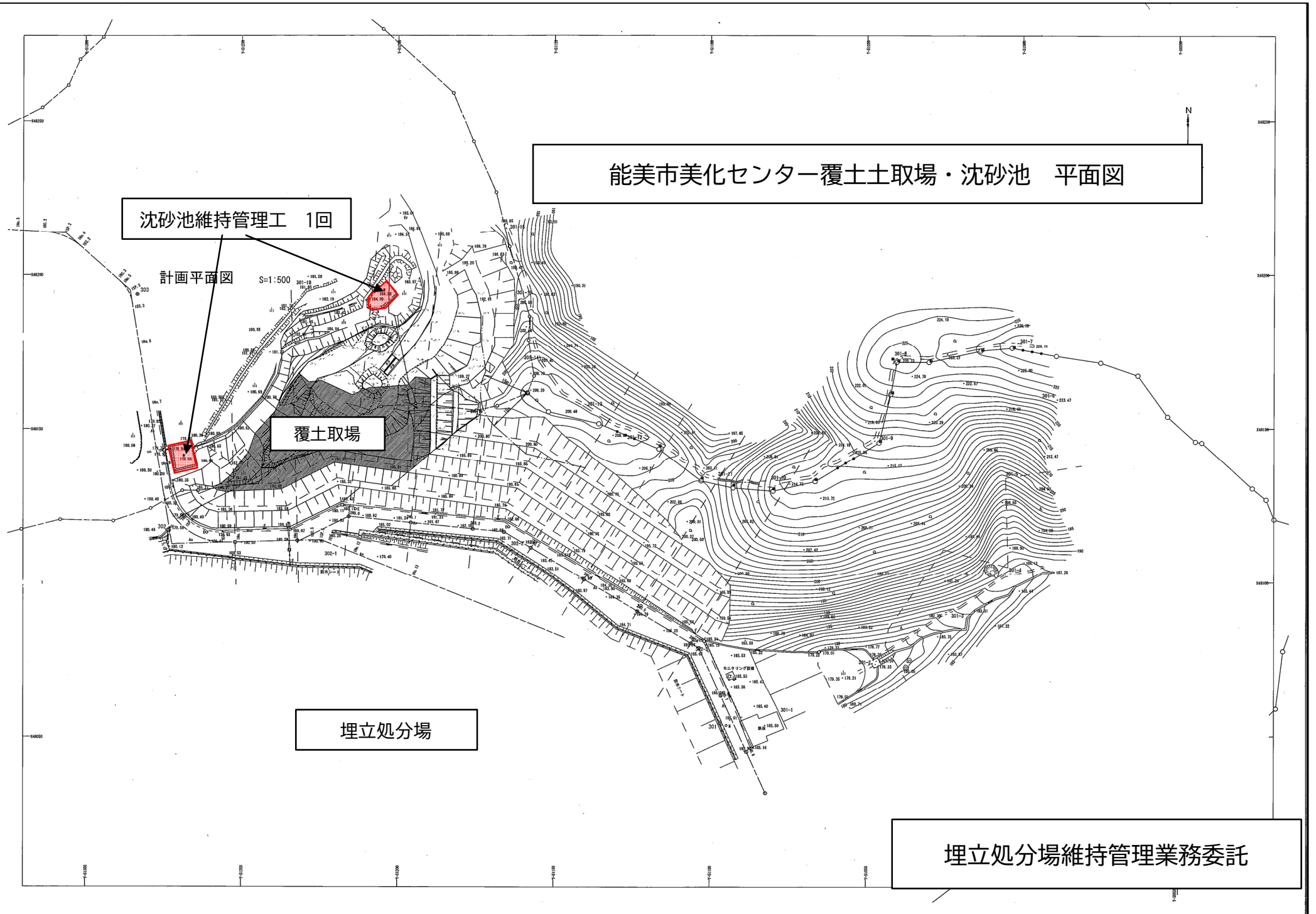
計画平面図

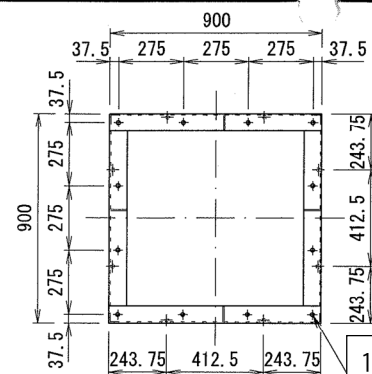
S=1:500

覆土取場

埋立処分場

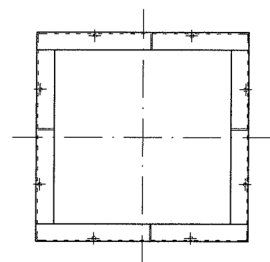
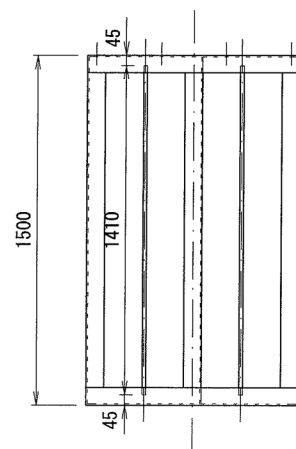
埋立処分場維持管理業務委託





L-6*75*75	
900*8P	49.32
1350*8P	73.98
RB $\phi$ 16*1410*4P	8.91
	132.21

12 -  $\phi$  20(裏面W5/8ナット溶接)



ガス抜き管用鋼製保護枠

埋立処分場維持管理業務委託